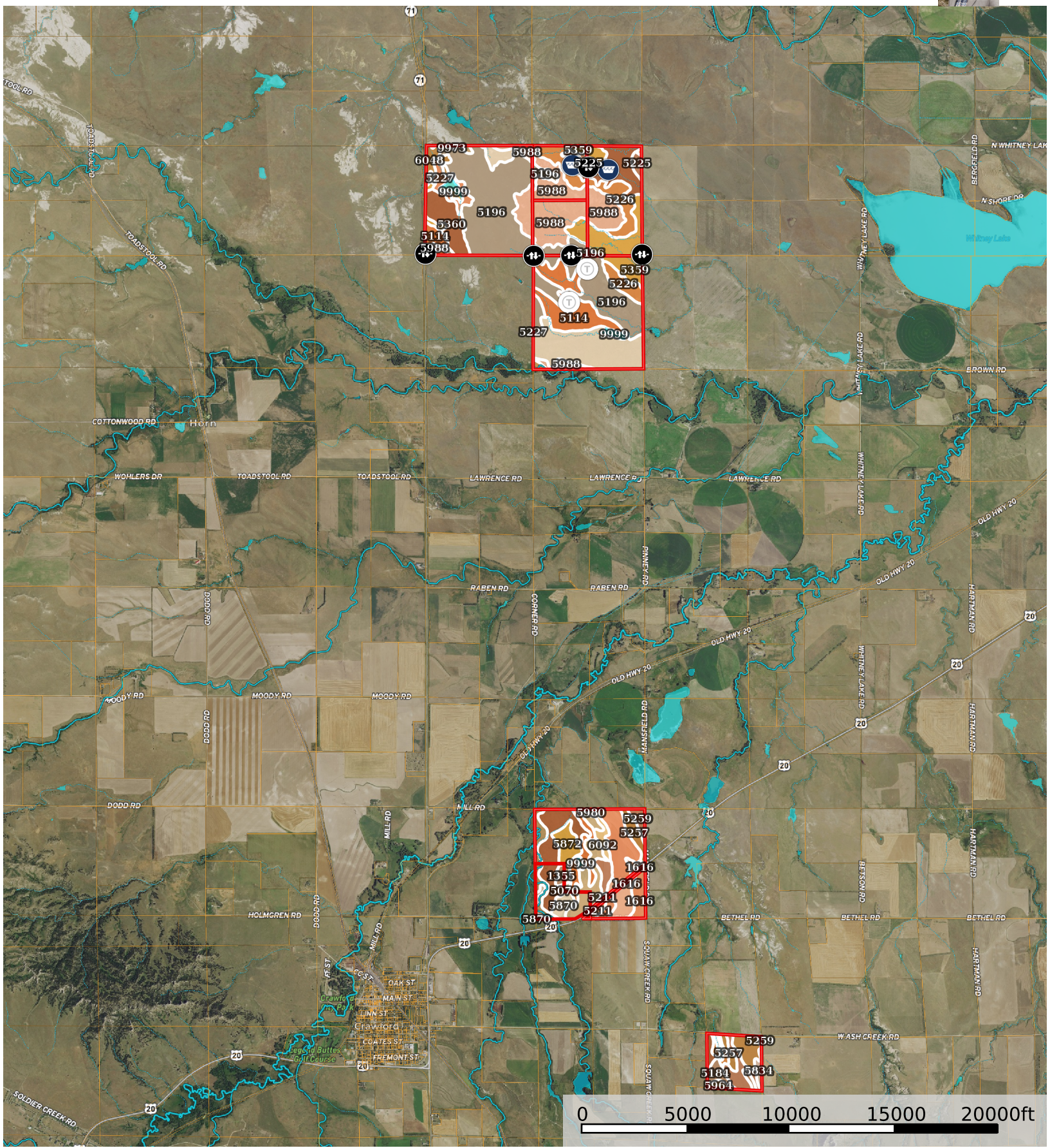


# Moore Ranch Nebraska, AC +/-



- Photo Point
- Water Storage Tank
- Gate
- Trough
- Pond / Tank
- Boundary
- Stream, Intermittent
- River/Creek
- Water Body

|  All Polygons 2700.35 ac

SOIL CODE	SOIL DESCRIPTION	ACRES	%	NCCPI	CAP
5196	Norrest silty clay loam, 3 to 9 percent slopes	620.03	22.96	23	4e
5988	Orella silty clay loam, 3 to 30 percent slopes	307.3	11.38	8	7e
5061	Buften-Hisle complex, 0 to 9 percent slopes	222.63	8.24	22	4e
5360	Kyle-Hisle complex, 0 to 2 percent slopes	185.63	6.87	17	4s
5359	Kyle silty clay, 2 to 6 percent slopes	175.82	6.51	27	4e
5114	Buften silty clay loam, 3 to 9 percent slopes	170.18	6.3	42	4e
5226	Pierre clay, 6 to 20 percent slopes	132.8	4.92	16	6e
1616	Keith-Ulysses silt loams, 3 to 9 percent slopes	131.0	4.85	57	3e
5070	Vetal and Bayard soils, 1 to 6 percent slopes	119.94	4.44	36	3e
5978	Jayem loamy very fine sand, 1 to 6 percent slopes	80.9	3.0	33	3e
5259	Thirtynine silt loam, 2 to 11 percent slopes, eroded	75.33	2.79	41	3e
5257	Thirtynine silt loam, 0 to 2 percent slopes	72.3	2.68	46	2e
1620	Keith silt loam, 0 to 3 percent slopes	46.76	1.73	57	2c
6093	Sarben fine sandy loam, 9 to 30 percent slopes	42.95	1.59	26	6e
1014	Bankard loamy fine sand, frequently flooded	40.89	1.51	15	6w
5872	Tripp silt loam, saline-alkali, 0 to 2 percent slopes	38.63	1.43	14	4s
5227	Pierre-Slickspots complex, 3 to 9 percent slopes	33.96	1.26	12	4e
5870	Tripp silt loam, 0 to 1 percent slopes	24.82	0.92	47	2c
9999	Water	23.61	0.87	-	-
6048	Orella-Badland complex, 9 to 30 percent slopes	23.58	0.87	4	7e
5184	Keota-Epping silt loams, 3 to 9 percent slopes	23.03	0.85	25	4e
6092	Sarben fine sandy loam, 6 to 9 percent slopes	17.73	0.66	35	4e
5225	Pierre clay, 2 to 6 percent slopes	15.04	0.56	17	4e
1355	Bridget silt loam, 0 to 1 percent slopes	12.86	0.48	46	2c
5115	Buften silty clay loam, 9 to 20 percent slopes	12.61	0.47	39	6e
5834	Mitchell silt loam, 0 to 1 percent slopes	9.89	0.37	44	3c
5211	Oglala-Canyon loams, 9 to 25 percent slopes	9.02	0.33	28	6e
5964	Jayem and Vetal loamy very fine sands, 6 to 9 percent slopes	8.32	0.31	32	4e
5612	Craft loam, channeled, frequently flooded	6.01	0.22	18	6w
1037	Glenberg loamy very fine sand, occasionally flooded, 0 to 3 percent slopes	6.0	0.22	29	4w
9973	Badland	4.02	0.15	-	8s
5600	Bigwinder fine sandy loam, frequently flooded	3.98	0.15	36	6w

5980	Jayem loamy very fine sand, 6 to 9 percent slopes	2.78	0.1	24	4e
TOTALS		2700.3 3(*)	100%	26.01	4.29

(\*) Total acres may differ in the second decimal compared to the sum of each acreage soil. This is due to a round error because we only show the acres of each soil with two decimal.

### | Boundary 621.14 ac

SOIL CODE	SOIL DESCRIPTION	ACRES	%	NCCPI	CAP
5196	Norrest silty clay loam, 3 to 9 percent slopes	353.93	56.98	23	4e
5360	Kyle-Hisle complex, 0 to 2 percent slopes	81.37	13.1	17	4s
5988	Orella silty clay loam, 3 to 30 percent slopes	52.74	8.49	8	7e
5227	Pierre-Slickspots complex, 3 to 9 percent slopes	33.93	5.46	12	4e
5114	Buften silty clay loam, 3 to 9 percent slopes	25.06	4.03	42	4e
6048	Orella-Badland complex, 9 to 30 percent slopes	23.58	3.8	4	7e
5061	Buften-Hisle complex, 0 to 9 percent slopes	21.46	3.45	22	4e
9999	Water	13.96	2.25	-	-
5359	Kyle silty clay, 2 to 6 percent slopes	11.09	1.79	27	4e
9973	Badland	4.02	0.65	-	8s
TOTALS		2700.3 3(*)	100%	19.76	4.4

(\*) Total acres may differ in the second decimal compared to the sum of each acreage soil. This is due to a round error because we only show the acres of each soil with two decimal.

### | Boundary 161.18 ac

SOIL CODE	SOIL DESCRIPTION	ACRES	%	NCCPI	CAP
5988	Orella silty clay loam, 3 to 30 percent slopes	106.05	65.8	8	7e
5196	Norrest silty clay loam, 3 to 9 percent slopes	35.33	21.92	23	4e
5359	Kyle silty clay, 2 to 6 percent slopes	19.8	12.28	27	4e
TOTALS		2700.3 3(*)	100%	13.62	5.97

(\*) Total acres may differ in the second decimal compared to the sum of each acreage soil. This is due to a round error because we only show the acres of each soil with two decimal.

### | Boundary 157.92 ac

SOIL CODE	SOIL DESCRIPTION	ACRES	%	NCCPI	CAP
5988	Orella silty clay loam, 3 to 30 percent slopes	70.85	44.86	8	7e
5226	Pierre clay, 6 to 20 percent slopes	44.38	28.1	16	6e
5360	Kyle-Hisle complex, 0 to 2 percent slopes	18.14	11.49	17	4s
5196	Norrest silty clay loam, 3 to 9 percent slopes	15.5	9.81	23	4e
5359	Kyle silty clay, 2 to 6 percent slopes	6.08	3.85	27	4e

5225	Pierre clay, 2 to 6 percent slopes	2.97	1.88	17	4e
TOTALS		2700.3 3(*)	100%	13.65	5.91

(\*) Total acres may differ in the second decimal compared to the sum of each acreage soil. This is due to a round error because we only show the acres of each soil with two decimal.

### | Boundary 317.42 ac

SOIL CODE	SOIL DESCRIPTION	ACRES	%	NCCPI	CAP
5359	Kyle silty clay, 2 to 6 percent slopes	97.95	30.86	27	4e
5360	Kyle-Hisle complex, 0 to 2 percent slopes	86.12	27.13	17	4s
5988	Orella silty clay loam, 3 to 30 percent slopes	64.11	20.2	8	7e
5226	Pierre clay, 6 to 20 percent slopes	54.77	17.26	16	6e
5225	Pierre clay, 2 to 6 percent slopes	12.07	3.8	17	4e
5196	Norrest silty clay loam, 3 to 9 percent slopes	2.4	0.76	23	4e
TOTALS		2700.3 3(*)	100%	18.14	4.95

(\*) Total acres may differ in the second decimal compared to the sum of each acreage soil. This is due to a round error because we only show the acres of each soil with two decimal.

### | Boundary 659.73 ac

SOIL CODE	SOIL DESCRIPTION	ACRES	%	NCCPI	CAP
5196	Norrest silty clay loam, 3 to 9 percent slopes	212.87	32.27	23	4e
5061	Buften-Hisle complex, 0 to 9 percent slopes	201.17	30.49	22	4e
5114	Buften silty clay loam, 3 to 9 percent slopes	145.12	22.0	42	4e
5359	Kyle silty clay, 2 to 6 percent slopes	40.9	6.2	27	4e
5226	Pierre clay, 6 to 20 percent slopes	33.65	5.1	16	6e
5988	Orella silty clay loam, 3 to 30 percent slopes	13.55	2.05	8	7e
9999	Water	6.43	0.97	-	-
5612	Craft loam, channeled, frequently flooded	6.01	0.91	18	6w
5227	Pierre-Slickspots complex, 3 to 9 percent slopes	0.03	0.0	12	4e
TOTALS		2700.3 3(*)	100%	26.19	4.18

(\*) Total acres may differ in the second decimal compared to the sum of each acreage soil. This is due to a round error because we only show the acres of each soil with two decimal.

### | Boundary 118.0 ac

SOIL CODE	SOIL DESCRIPTION	ACRES	%	NCCPI	CAP
5070	Vetal and Bayard soils, 1 to 6 percent slopes	37.29	31.6	36	3e
5870	Tripp silt loam, 0 to 1 percent slopes	21.96	18.61	47	2c
5978	Jayem loamy very fine sand, 1 to 6 percent slopes	21.12	17.9	33	3e

1014	Bankard loamy fine sand, frequently flooded	20.96	17.76	15	6w
1355	Bridget silt loam, 0 to 1 percent slopes	7.31	6.19	46	2c
1037	Glenberg loamy very fine sand, occasionally flooded, 0 to 3 percent slopes	6.0	5.08	29	4w
6093	Sarben fine sandy loam, 9 to 30 percent slopes	2.7	2.29	26	6e
5872	Tripp silt loam, saline-alkali, 0 to 2 percent slopes	0.35	0.3	14	4s
5211	Oglala-Canyon loams, 9 to 25 percent slopes	0.31	0.26	28	6e
TOTALS		2700.3 3(*)	100%	33.73	3.42

(\*) Total acres may differ in the second decimal compared to the sum of each acreage soil. This is due to a round error because we only show the acres of each soil with two decimal.

### | Boundary 424.07 ac

SOIL CODE	SOIL DESCRIPTION	ACRES	%	NCCPI	CAP
1616	Keith-Ulysses silt loams, 3 to 9 percent slopes	89.35	21.07	57	3e
5070	Vetal and Bayard soils, 1 to 6 percent slopes	71.65	16.9	36	3e
5978	Jayem loamy very fine sand, 1 to 6 percent slopes	59.78	14.1	33	3e
6093	Sarben fine sandy loam, 9 to 30 percent slopes	40.25	9.49	26	6e
5872	Tripp silt loam, saline-alkali, 0 to 2 percent slopes	38.28	9.03	14	4s
5259	Thirtynine silt loam, 2 to 11 percent slopes, eroded	33.88	7.99	41	3e
5257	Thirtynine silt loam, 0 to 2 percent slopes	25.09	5.92	46	2e
1014	Bankard loamy fine sand, frequently flooded	19.93	4.7	15	6w
6092	Sarben fine sandy loam, 6 to 9 percent slopes	17.73	4.18	35	4e
1620	Keith silt loam, 0 to 3 percent slopes	11.44	2.7	57	2c
1355	Bridget silt loam, 0 to 1 percent slopes	5.55	1.31	46	2c
9999	Water	3.22	0.76	-	-
5870	Tripp silt loam, 0 to 1 percent slopes	2.86	0.67	47	2c
5980	Jayem loamy very fine sand, 6 to 9 percent slopes	2.78	0.66	24	4e
5211	Oglala-Canyon loams, 9 to 25 percent slopes	2.28	0.54	28	6e
TOTALS		2700.3 3(*)	100%	37.41	3.48

(\*) Total acres may differ in the second decimal compared to the sum of each acreage soil. This is due to a round error because we only show the acres of each soil with two decimal.

### | Boundary 83.4 ac

SOIL CODE	SOIL DESCRIPTION	ACRES	%	NCCPI	CAP
1616	Keith-Ulysses silt loams, 3 to 9 percent slopes	41.65	49.94	57	3e
1620	Keith silt loam, 0 to 3 percent slopes	35.32	42.35	57	2c
5211	Oglala-Canyon loams, 9 to 25 percent slopes	6.43	7.71	28	6e

TOTALS		2700.3 3(*)	100%	54.76	2.81
--------	--	----------------	------	-------	------

(\*) Total acres may differ in the second decimal compared to the sum of each acreage soil. This is due to a round error because we only show the acres of each soil with two decimal.

|  Boundary 157.49 ac

SOIL CODE	SOIL DESCRIPTION	ACRES	%	NCCPI	CAP
5257	Thirtynine silt loam, 0 to 2 percent slopes	47.21	29.97	46	2e
5259	Thirtynine silt loam, 2 to 11 percent slopes, eroded	41.45	26.32	41	3e
5184	Keota-Epping silt loams, 3 to 9 percent slopes	23.03	14.62	25	4e
5115	Buften silty clay loam, 9 to 20 percent slopes	12.61	8.01	39	6e
5070	Vetal and Bayard soils, 1 to 6 percent slopes	11.0	6.98	36	3e
5834	Mitchell silt loam, 0 to 1 percent slopes	9.89	6.28	44	3c
5964	Jayem and Vetal loamy very fine sands, 6 to 9 percent slopes	8.32	5.28	32	4e
5600	Bigwinder fine sandy loam, frequently flooded	3.98	2.53	36	6w
TOTALS		2700.3 3(*)	100%	39.23	3.22









(\*) Total acres may differ in the second decimal compared to the sum of each acreage soil. This is due to a round error because we only show the acres of each soil with two decimal.

## Capability Legend

Increased Limitations and Hazards

Decreased Adaptability and Freedom of Choice Users

Land, Capability

								
	1	2	3	4	5	6	7	8
'Wild Life'	•	•	•	•	•	•	•	•
Forestry	•	•	•	•	•	•	•	
Limited	•	•	•	•	•	•	•	
Moderate	•	•	•	•	•	•		
Intense	•	•	•	•	•			
Limited	•	•	•	•				
Moderate	•	•	•					
Intense	•	•						
Very Intense	•							

### Grazing Cultivation

(c) climatic limitations (e) susceptibility to erosion

(s) soil limitations within the rooting zone (w) excess of water